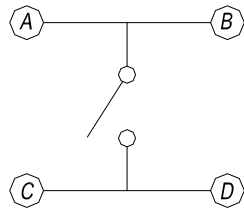
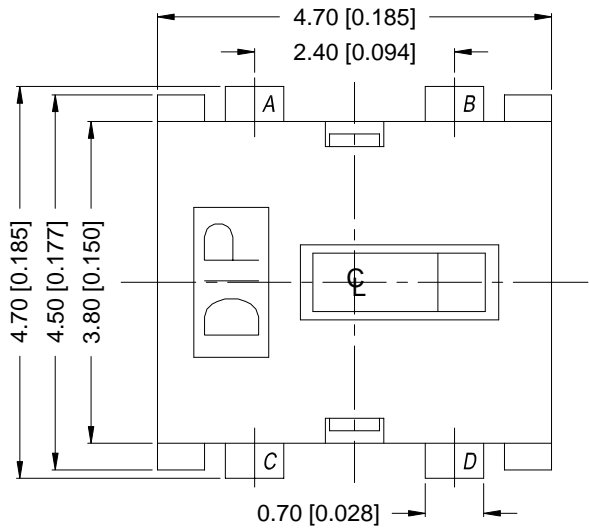


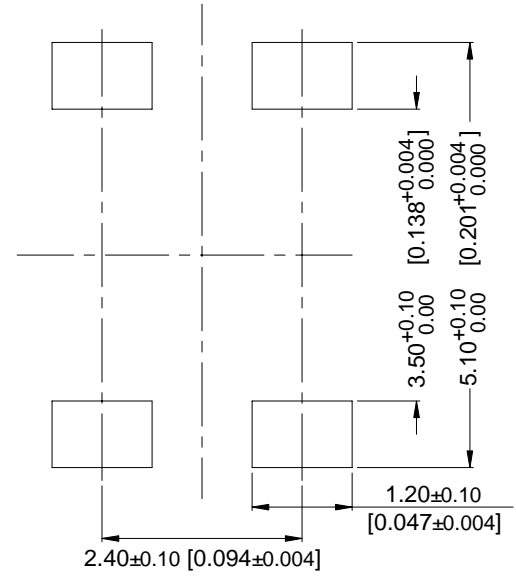
ATE SERIES

**DIMENSIONS**

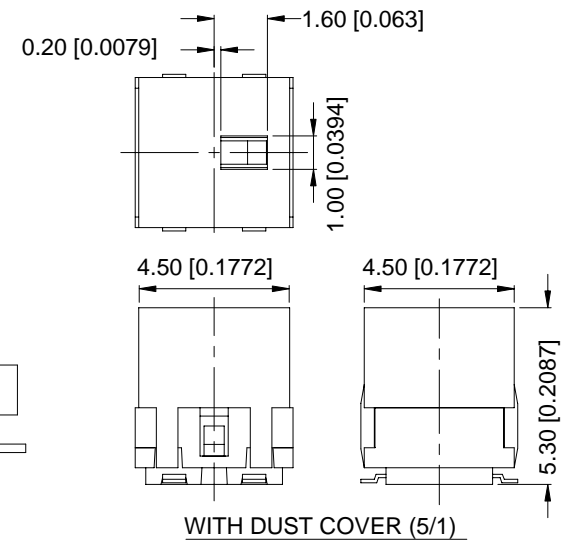
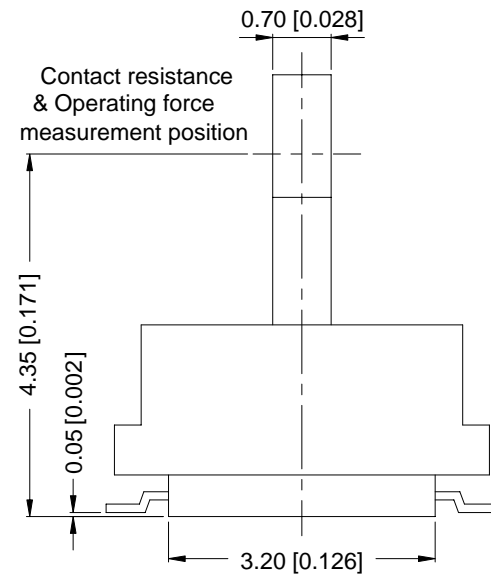
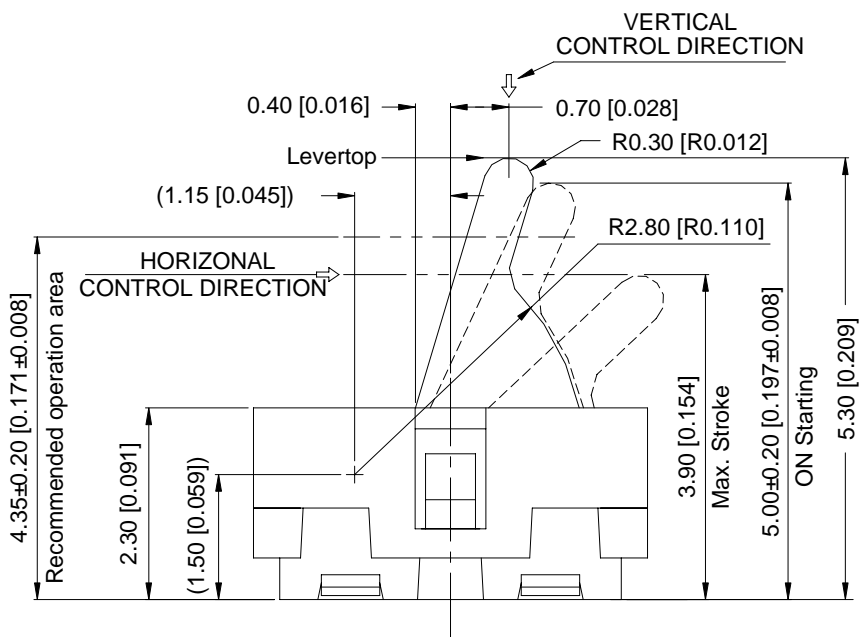
**ATE-1**



CIRCUIT DIAGRAM

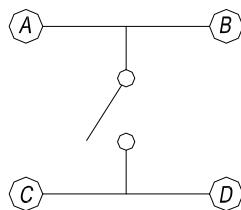
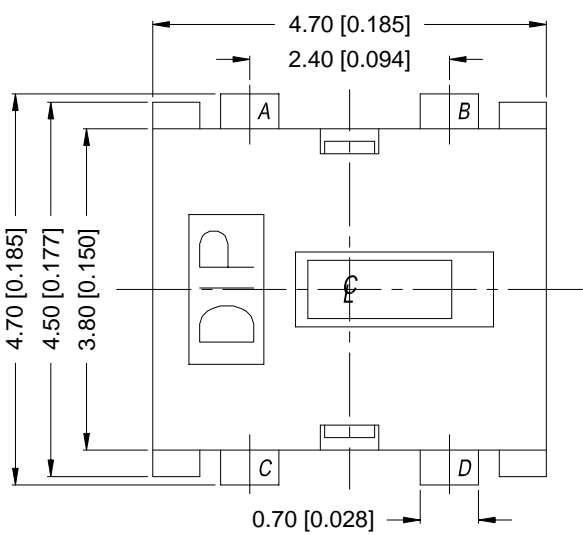


P.C.B LAYOUT

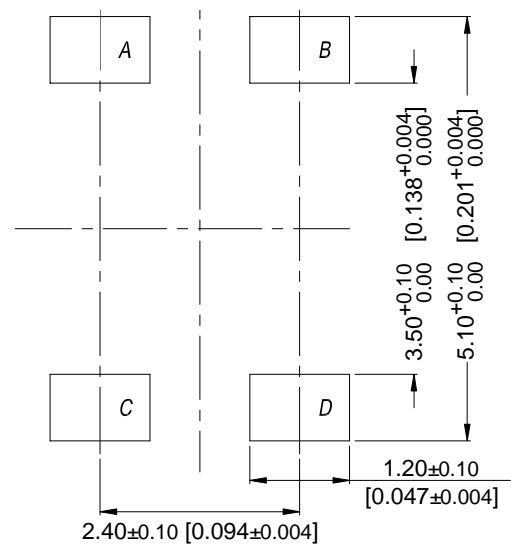


General Tolerance : ±0.2mm

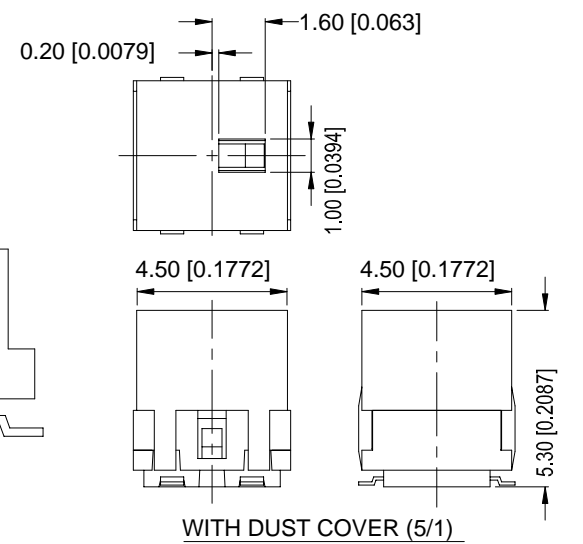
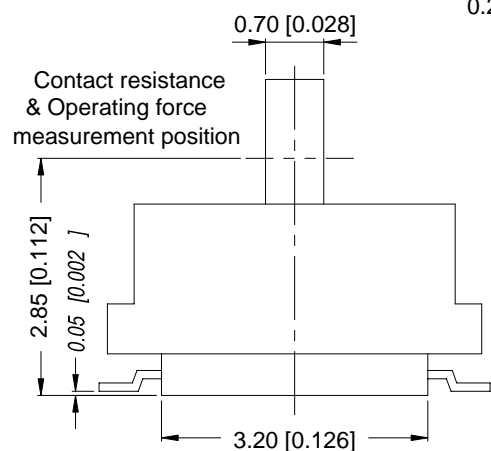
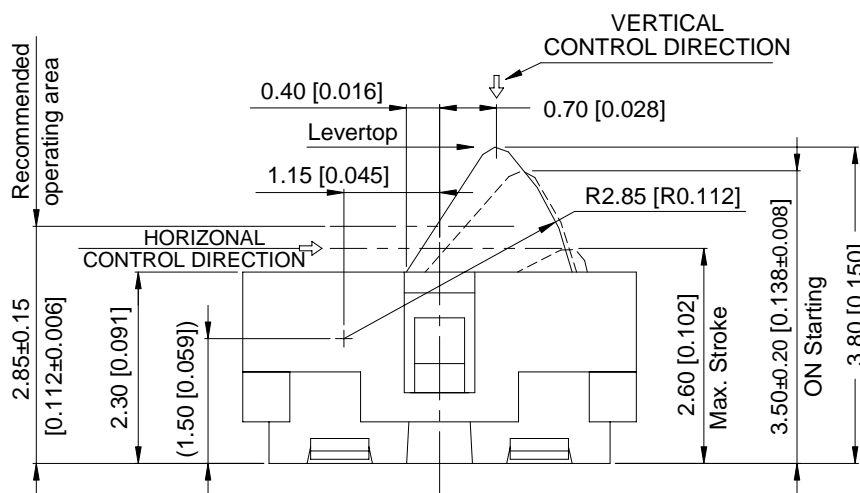
**ATE-2**



CIRCUIT DIAGRAM

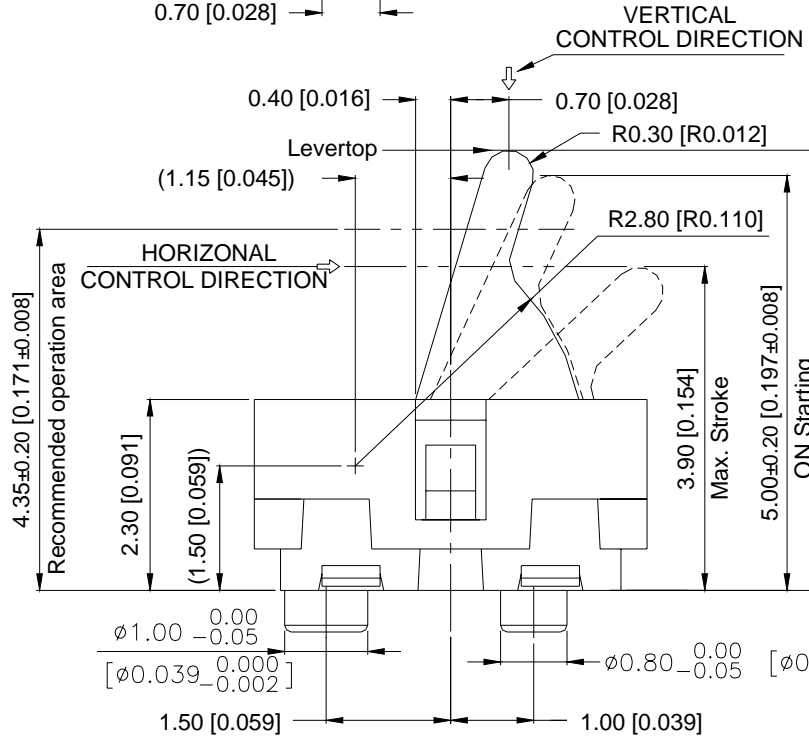
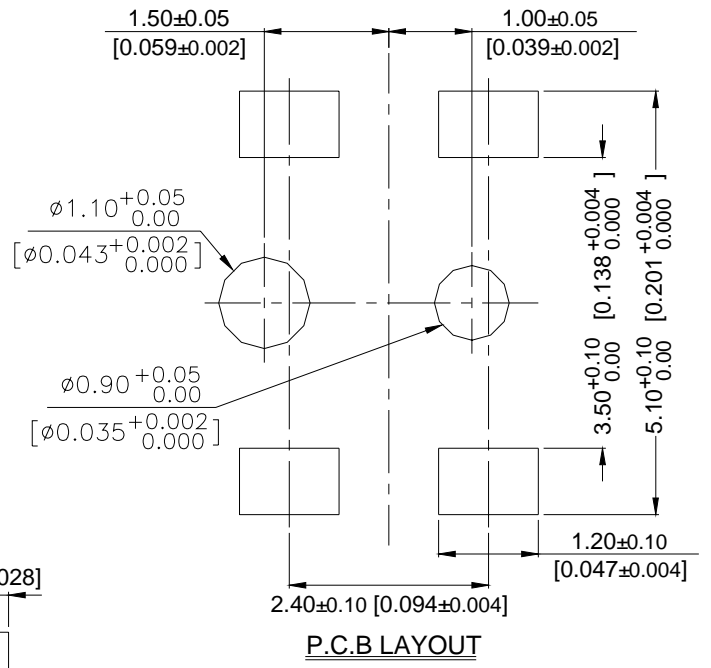
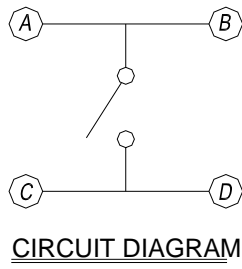
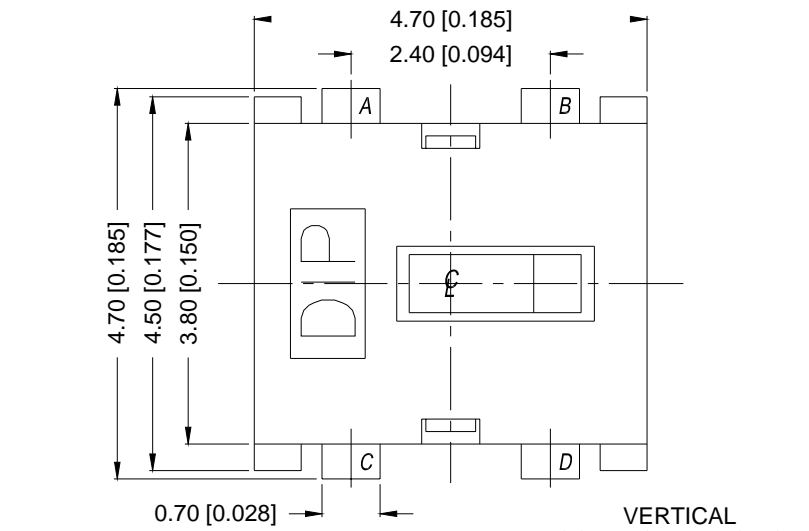


P.C.B LAYOUT

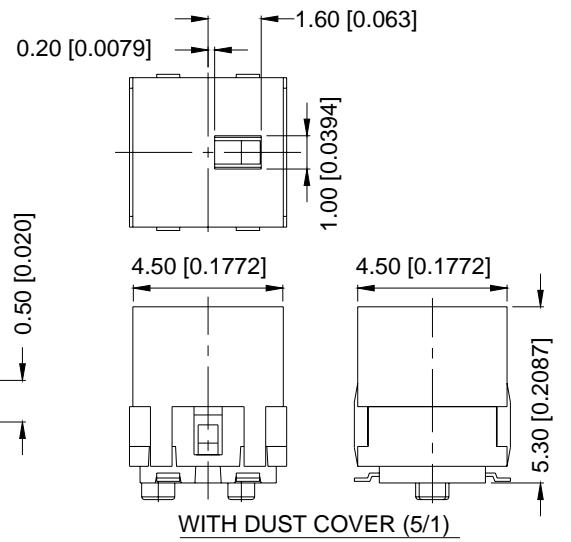


General Tolerance : ±0.2mm

**ATE-1C**

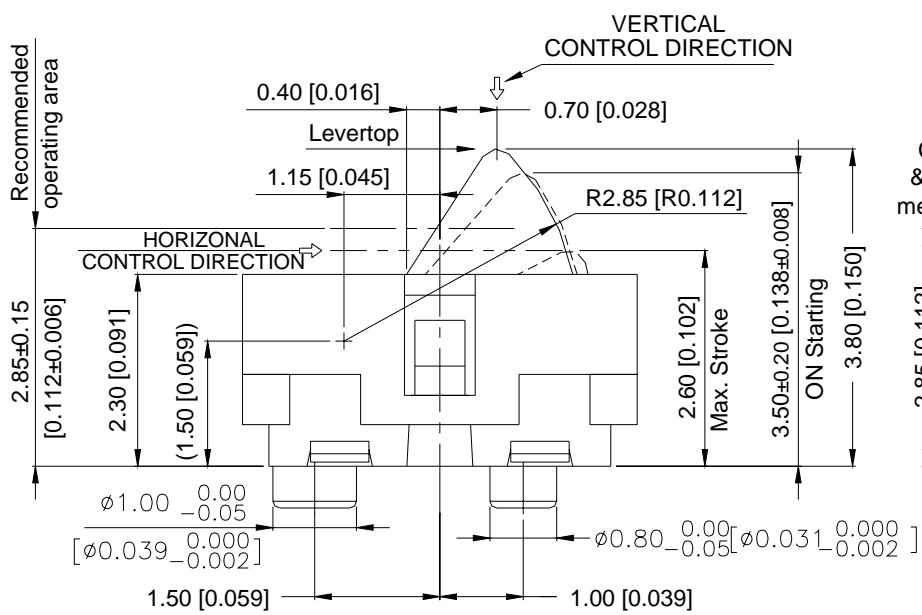
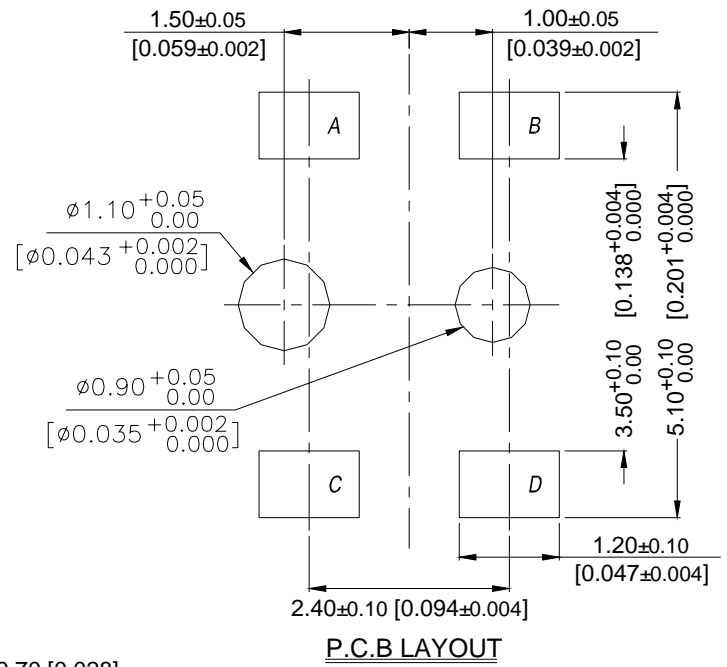
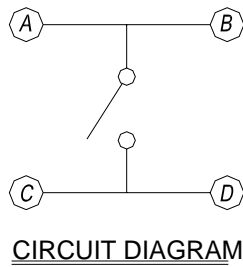
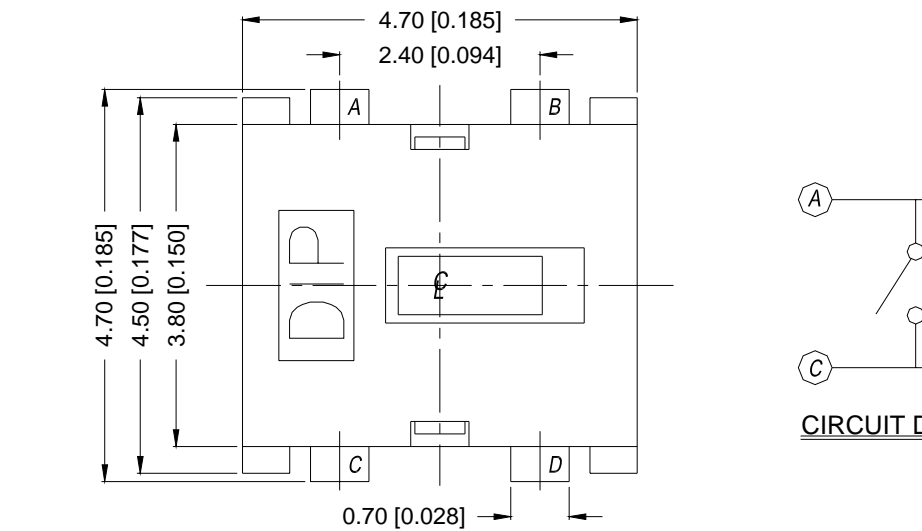


Contact resistance & Operating force measurement position

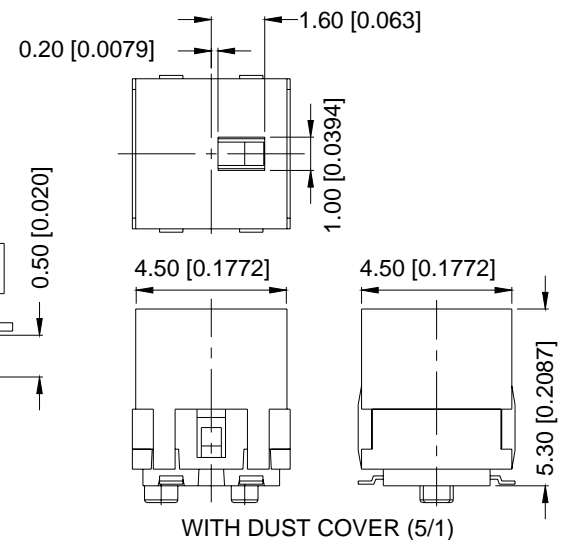


General Tolerance : ±0.2mm

**ATE-2C**



Contact resistance & Operating force measurement position



General Tolerance : ±0.2mm

## HOW TO ORDER

ATE -    - V -

Package :  
T/R=Tape & Reel  
V=Lead Free Solderable  
K=Cover  
C=With Post  
=Without Post  
Stem Height :  
1=5.30 mm  
2=3.80 mm

DETECTOR SWITCH

## SPECIFICATION

### △MECHANICAL

Operation Force: 40gf max.

Stork : 3.90mm max. < Stem Height 5.30mm>

2.60mm max. < Stem Height 3.80mm>

Operation Temperature: -10°C to +60°C

Storage Temperature: -20°C to +70°C

### △ELECTRICAL

Electrical Life: 100,000 cycles

Rating:1mA , 5VDC

Contact Resistance: 1Ω max.

Insulation Resistance: 100MΩ min. 100V DC

Dielectric Strength: 100VAC / 1 minute

Rate of Operation: 20~25 operation per minute

## MATERIAL

△Cover(1) : LCP High-temp Thermoplastic.

Color : Black

△Cover(2) : LCP High-temp Thermoplastic.

Color : Black

△STEM : LCP High-temp Thermoplastic.

Color : Black

△CONTACT : Stainless with silver cladding.

△BASE : PA9T High-temp Thermoplastic

Color : Black

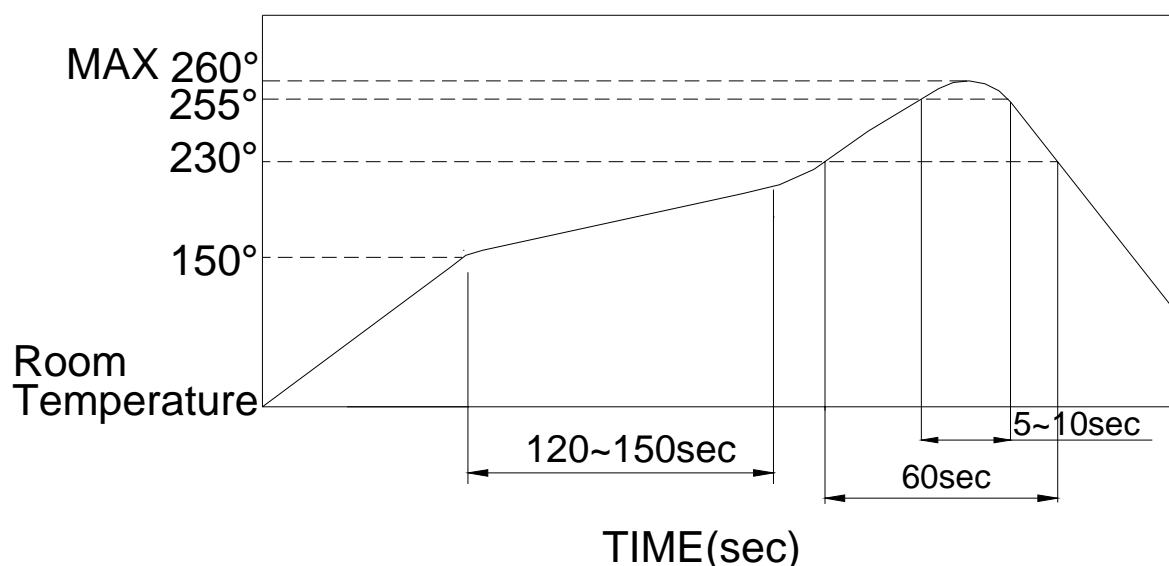
△TERMINAL : Brass, Silver Plating.

## SOLDERING PROCESS

△HAND SOLDERING: Use a soldering iron of 30 watts, controlled at 350°C approximately Max 5 seconds while applying.

△REFLOW SOLDERING : When applying reflow soldering, the peak temperature or the reflow oven should be set to 260°C max.

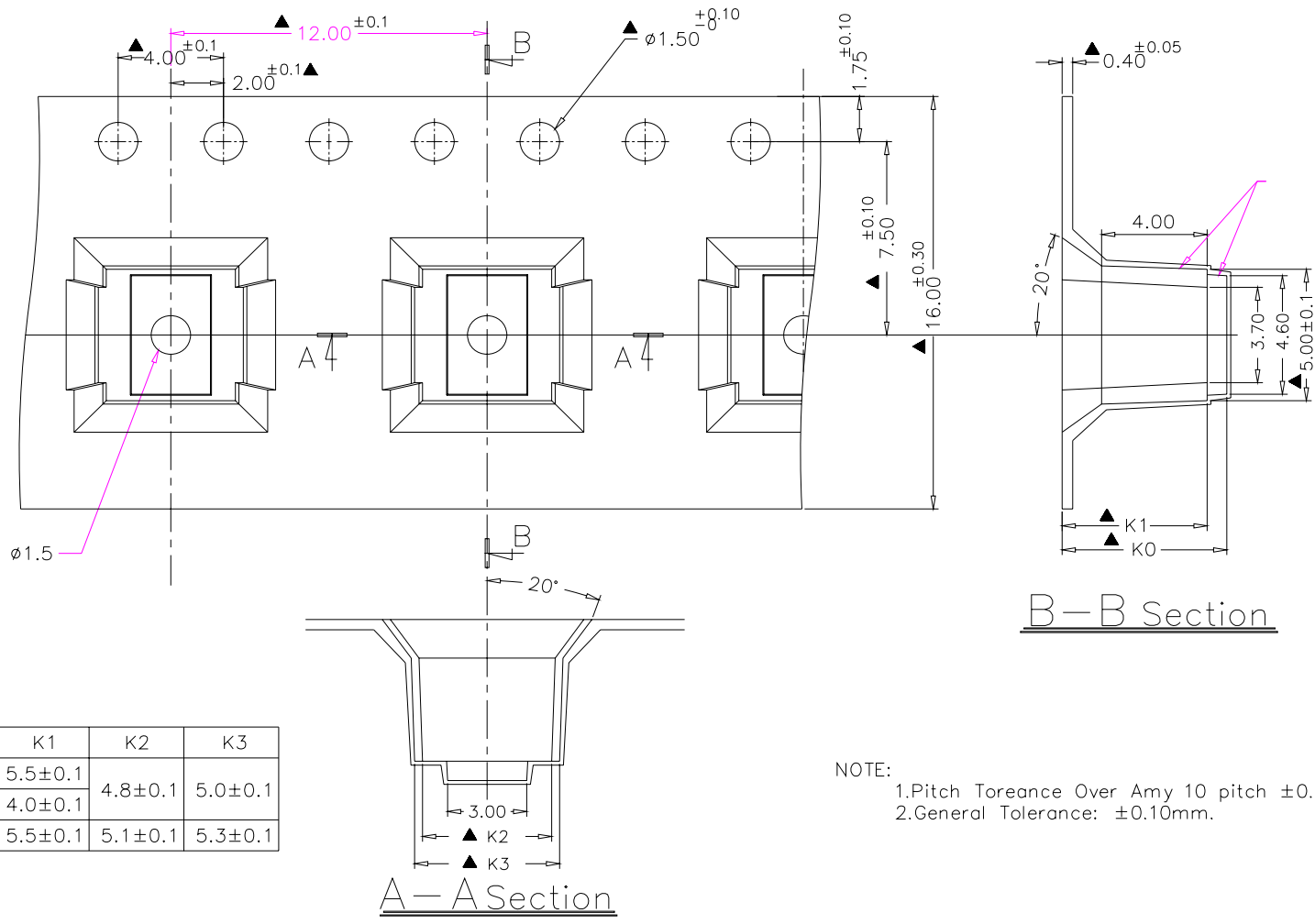
△Temperature Profile :



# PACKING

Part Number	Number Per Reel	
ATE-1□□-T/R	900	
ATE-2K-T/R	900	
ATE-2CK-T/R	900	
ATE-2-T/R	1200	
ATE-2C-T/R	1200	

## ATE-1、2 REEL



PART NO.	NO.	K0	K1	K2	K3
ATE-1		$6.1 \pm 0.1$	$5.5 \pm 0.1$	$4.8 \pm 0.1$	$5.0 \pm 0.1$
ATE-2		$4.6 \pm 0.1$	$4.0 \pm 0.1$	$4.8 \pm 0.1$	$5.0 \pm 0.1$
ATE-C		$6.1 \pm 0.1$	$5.5 \pm 0.1$	$5.1 \pm 0.1$	$5.3 \pm 0.1$

NOTE:  
 1. Pitch Tolerance Over Any 10 pitch  $\pm 0.20$ mm.  
 2. General Tolerance:  $\pm 0.10$ mm.

General Tolerance :  $\pm 0.1$ mm